



## RapidRoll® 3000 Series

The High Performance Door  
for external applications

# The RapidRoll® 3000 series

Albany Door Systems 3000 series high performance doors combine the greatest functionality with modern design. Their outstanding engineering makes the doors extremely fast, safe, robust and guarantees an extremely long service life with low maintenance needs. The stylish modern design, achieved by using polished aluminium slats and large windows, ensures an attractive appearance and perfect integration into building facades.



## VARIETY OF MODELS

The RapidRoll® 3000 is available in various versions in addition to the standard version illustrated: The RapidRoll® 3000 R for tight spaces, the RapidRoll® 3000 XXL for large openings, the RapidRoll® 3000 ISO for enhanced insulation or the RapidRoll® 3000 GL for very high transparency. There is a wide range of accessories to customise the doors.

## DOOR MATERIAL

The side frames are manufactured from galvanised steel and can optionally be powder-coated in a wide variety of RAL colours.

## DOOR CURTAIN

The following designs are available:

- Double-walled aluminium slats, anodised without windows or with acrylic glass window slats
- Double-walled aluminium slats in combination with windows made of transparent PVC
- Clear SAN window slats, transparency > 70%
- Anodised aluminium slats (exterior) with additional (interior) insulating chamber
- Perforated slats

The aluminium slats can be coated in a wide variety of RAL colours, custom colours are also possible.

## ACTUATORS

Modifications to individual required functions can be implemented with additional safety devices such as infrared or radar motion detectors and a wide variety of industrial actuators (switches, induction loops, radio transmitters etc.). We are happy to advise you and put together a tailor-made configuration for you.

## BOTTOM PROFILE

A profile with a lengthened flexible seal, which may optionally be extended, is used to seal the door against the ground.

## MATCHING PEDESTRIAN DOOR

If desired, a pedestrian door of identical appearance can be supplied as a option.



## RAPID SERVICING AND MAINTENANCE

The entire door structure has been developed with minimum service and maintenance effort in mind. For example, thanks to their individual suspension from the rubber belt, each slat can be replaced individually, rapidly and easily.



## INSULATION

The RapidRoll® 3000 ISO meets high demands on thermal insulation. The modified curtain has additional insulation (chamber system) with complete thermal separation. The door is further characterised by particularly quiet operation.



## CONTACTLESS WINDING

The innovative Disc Drive technology used in the RapidRoll® 3000 supports the door curtain movement thereby ensuring a long service life. The aluminium slats are wound onto winding discs without contact. Using this technology, the door can be opened and closed very quickly and with no wear.



## MOTOR AND TOP ROLL COVER

Motor and top roll covers of anodised aluminium are available as an option. Inspection covers to the side can be opened for servicing work.



## MOTOR POSITION

The gear motor can be positioned on the right or on the left side of the door. The drive is integrated into the side frame in the RapidRoll® 3000 R.

## CONTROL SYSTEM

The RapidRoll® 3000 is equipped as standard with the MCC <sup>Vector Control</sup> frequency converter control, which permits high opening and closing speeds, and also a gentle, quiet, and hence low-wear, motion sequence.

The compact control unit is integrated in the door's design and mounted under the drive. The hardware and software can be customised to meet customer-specific requirements and expanded by additional functions as needed.



## CONTROL UNIT

The user-friendly graphical control unit with a display gives the user information about the current status of the door and all of the important technical parameters by means of plain text at any time. In addition, the system stores all operating and service data and shows, for example, when a new service date is pending.



## MANUAL ACTIVATION

In the event of a power failure the door can be opened manually with the use of a brake release handle. The door is partially opened automatically by a spring system in the side frames.



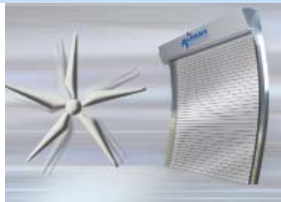
## SAFETY FEATURES

The RapidRoll® 3000 is equipped as standard with a contactless, pre-running photocell on the leading closing edge and a stationary photocell which prevent the door from closing as long as persons or objects are in the closing plane.



## WIND LOADS

Depending on the model, the RapidRoll® 3000 meets the requirements of classes 3 or 4 as specified in EN 12424.







## The basic model

- The exterior door for busy doorways
- High opening speed (max. 2.3 m/s)
- High wind class 3/4 in accordance with EN 12424
- Dimensions up to 5 x 5 m
- Double-walled aluminium slat curtain, optionally with windows or perforated slats for ventilation
- Good noise insulation
- Optionally also available as a laser protection door



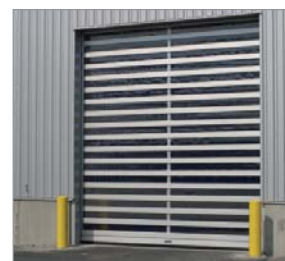
## RapidRoll® 3000 L



## The economic one

Basic model

- + Higher transparency thanks to 60 % PVC in the section
- + Inexpensive to purchase
- + Also ideal for use in the interior for busy doorways



## RapidRoll® 3000 GL



## The transparent one

Basic model

- + Maximum transparency and translucency > 70%
- + Large, crystal-clear SAN plastic panes, set in anodised aluminium profiles
- + Ideal for use in showrooms





## The space-saver

Basic model

- + Minimum lintel space
- + Motor built into the side frame
- + Slender side frames for doors  $\leq 3.8$  m wide
- + Curtain variants with perforated slats
- + Ideal for use in underground garages



## RapidRoll® 3000 XXL



## The big one

Basic model

- + Can be supplied in sizes up to 8 m wide and 6 m high
- + Ideal for use in industrial buildings with busy traffic



## RapidRoll® 3000 ISO



## The energy-efficient one

Basic model

- + Optimum insulation thanks to insulating slats (chamber system)
- + Complete thermal isolation of the door curtain
- + Maximum energy savings
- + Double-glazed window



# RapidRoll® 3000 High Performance Door

TECHNICAL DATA	RapidRoll® 3000	RapidRoll® 3000 L	RapidRoll® 3000 GL	RapidRoll®
<b>Application</b>	As an exterior or interior door also suitable as a laser protection door	Suitable as an exterior or interior door	Suitable as an exterior or interior door	As an exterior or interior and as a laser or mach protection door
<b>Wind resistance</b>	Class 3 - EN 12424	Class 3 - EN 12424	Class 3 - EN 12424	Class 3 - EN 12424
<b>Door dimension (mm)</b> (DW min./max.) (DH min./max.) Door area Side frame excluding motor	600/5000 mm 2500/5000 mm 25 m² 325mm	600/5000 mm 2500/5000 mm 25 m² 325 mm	600/5000 mm 2500/5000 mm 25 m² 325 mm	600/6000 mm 1500/3000 mm 18 m² 220 mm (360 mm for
<b>Opening direction</b>	vertical			
<b>Covers</b> Top roll cover/motor cover	<ul style="list-style-type: none"> <li>Aluminium</li> </ul>			

Surface material				
Side frames	<ul style="list-style-type: none"> <li>✓ Galvanised steel</li> <li>• RAL powder-coated</li> </ul>			

Door curtain				
Anodised aluminium slats	✓	✓	✓	✓
Isolation	•	–	–	•
Coloured profiles (RAL)	•	–	–	•
Profiles with windows	•	–	–	•
SAN plastic profiles	–	–	✓	–
Anodised aluminium with horizontal vision panels made from transparent PVC	–	✓	–	–
Lengthened flexible seal	•	•	•	•

Drive unit/control system				
Drive unit	electric			
MCC <sup>Vector Control</sup>	✓	✓	✓	✓
Chain drive to reduce the mounting space to the side	•	•	•	–
Motor power	1.1 kW			
Opening/closing speed up to max.	2.2 / 0.7 m/s	2.2 / 0.7 m/s	1.8 / 0.7 m/s	2.0 / 0.6 m/s
Fuse protection	10 A			
Control voltage	24 V DC			
Protection degree	IP 55			
Mains connection	3L(N)/PE 380/400/415/440/480V, 50/60 Hz/Intermediate transformer re			
Additional opening height	✓	✓	✓	✓
Potential-free contacts	•	•	•	•

Safety				
Electrical safety contact edge	•	•	–	•
Door line photocell	✓	✓	✓	✓
Pre-running photocell	✓	✓	✓	✓
Curtain tension	✓	✓	✓	✓
Counterbalance	✓	✓	✓	✓
Self-opening, partial	✓	✓	✓	✓
Mannual operation with Bowden cable	✓	✓	✓	✓
Break release lever outside	•	•	•	•

Traffic light function				
Without direction detection	✓ 24 V DC			
With direction detection	✓ 24 V DC			
Flashing alarm light	✓ 24 V DC			
Error message	✓ Text			



3000 R	RapidRoll® 3000 XXL	RapidRoll® 3000 ISO
For door ministry	As an exterior or interior door	As an exterior or interior door
	Class 2 - 4 - EN 12424	Class 3 - EN 12424
width > 3800)	1000/8000 mm 2500/6000 mm 36 m² 350 mm	1000/6000 mm 2500/5000 mm 30 m² 350mm


	✓	✓
	•	✓
	•	•
	•	•
	–	–
	–	–
	•	•

	✓	✓
	–	–
	1.8 / 0.6 m/s	2.0 / 0.6 m/s

	✓	✓
quired for 220/230/500V	•	•

	–	–
	✓	✓
	✓	✓
	–	–
	✓	✓
	✓	✓
	✓	✓
	•	•




## SAFETY

The door is designed according to the Workplace Directive of the UVV regulations and the harmonized CE Guidelines including the EN 13241-1.

## NOTES

The door safety devices are designed for the normal use of power-operated doors in accordance with the harmonized CE Guidelines. In addition to this, difficult environmental conditions may affect the proper use. For more information or to schedule an on-site inspection, please contact an Albany Door System sales engineer.

- Option
- ✓ Standard
- Not possible

1) For doors with a height < 2500 mm the use of top roll and motor cover is required according to standard EN 13241-1.

UNDERGROUND GARAGE



FAÇADE DESIGN



HIGH BAY SHELVING



LOGISTICS



TRUCK LOADING



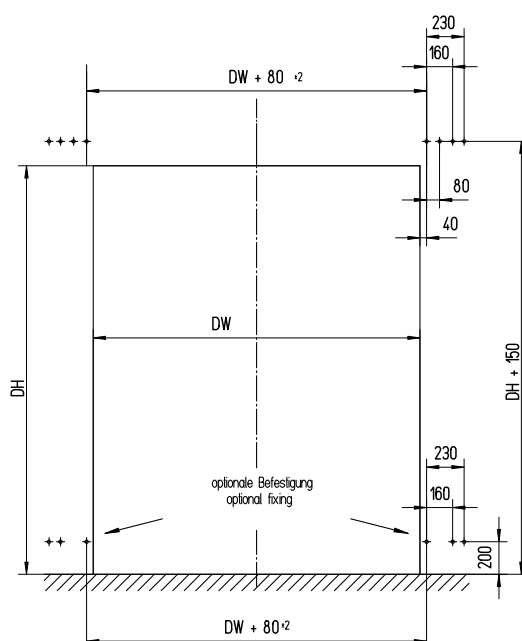
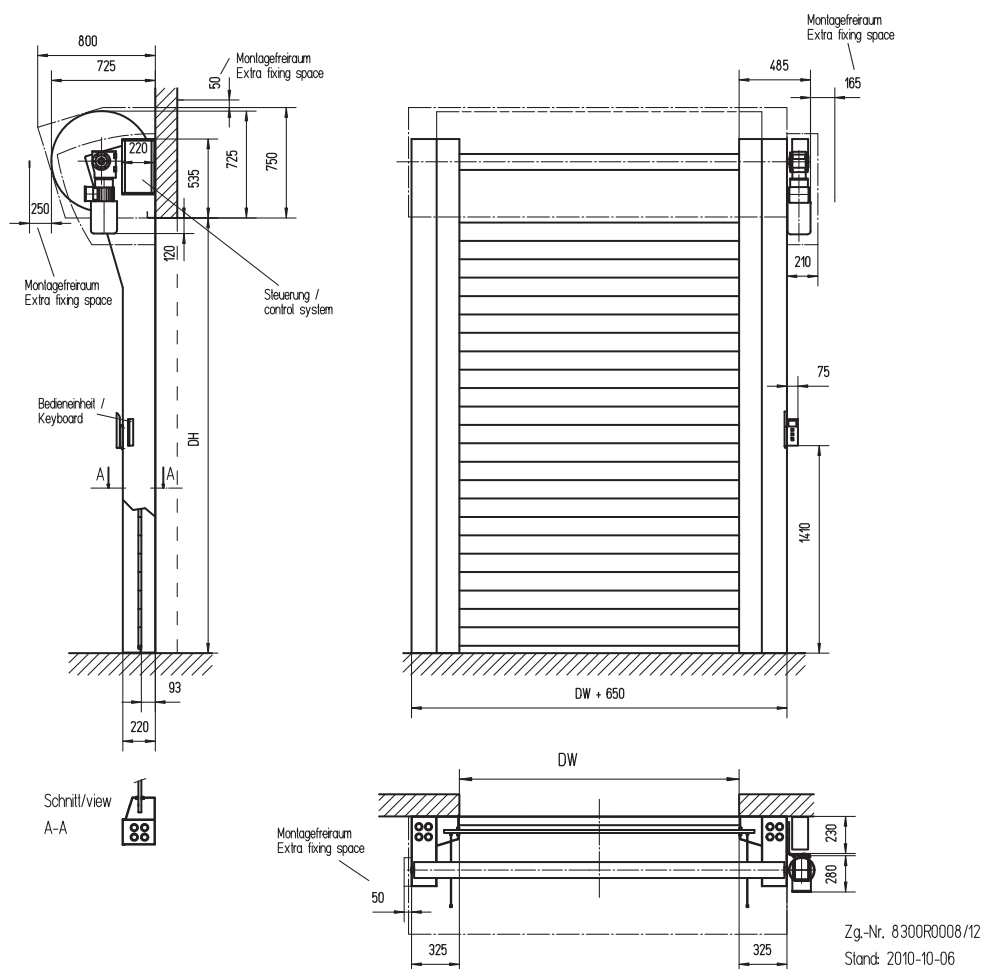
PAINT DESIGN



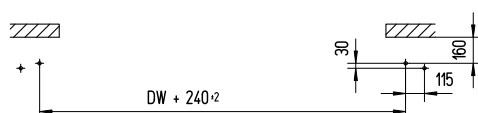


# General drawing / Fixing plan

## RapidRoll® 3000 / 3000 L / 3000 GL

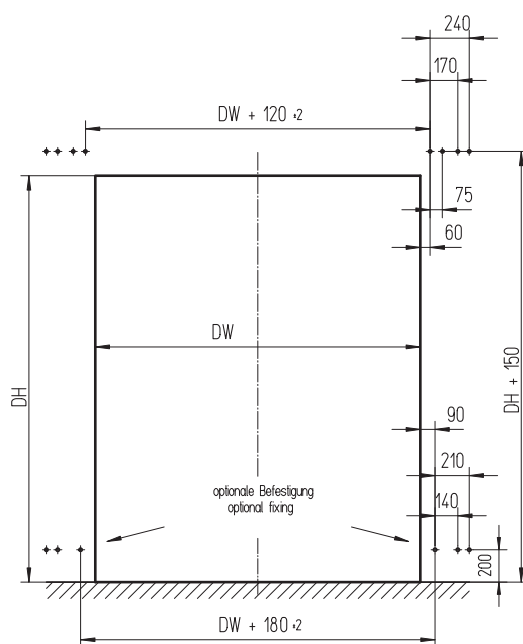


Befestigungsschrauben M12 oder vergleichbare  
fixing screws M12 or comparables



Zg.Nr. 8300R0007/4  
Stand: 2010-11-22

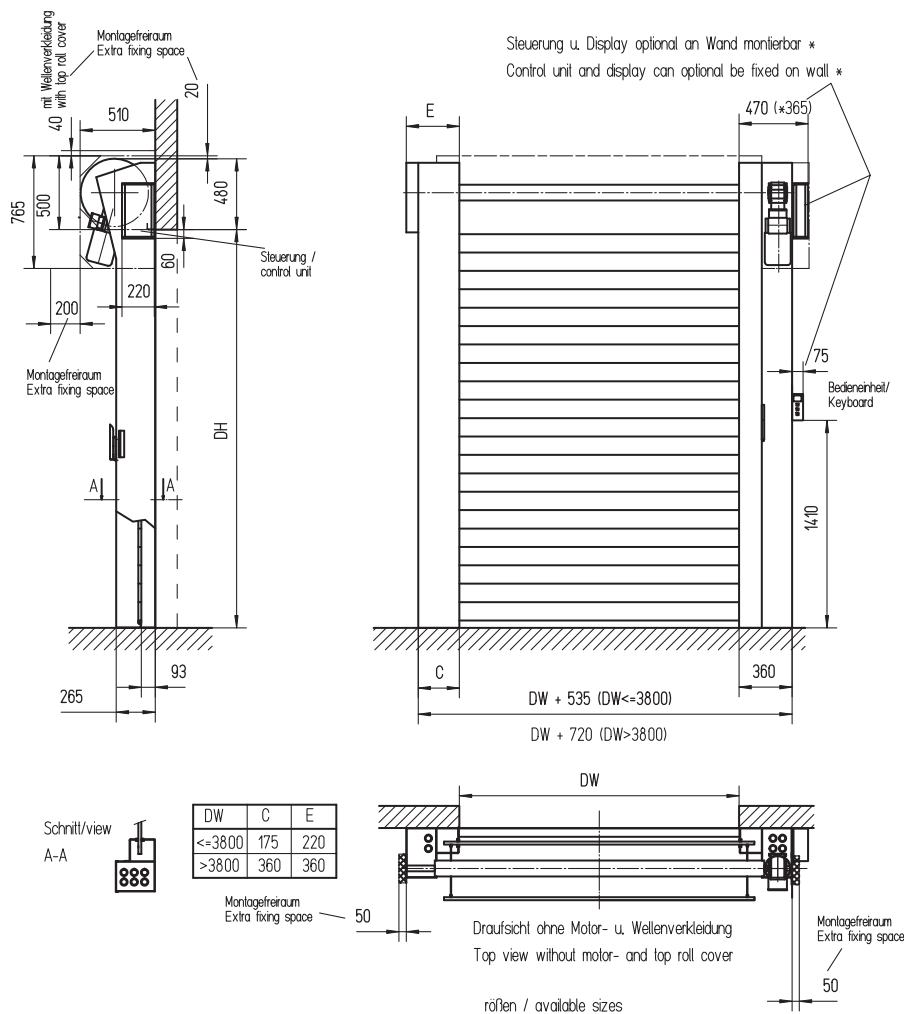
## RapidRoll® 3000 XXL / 3000 ISO



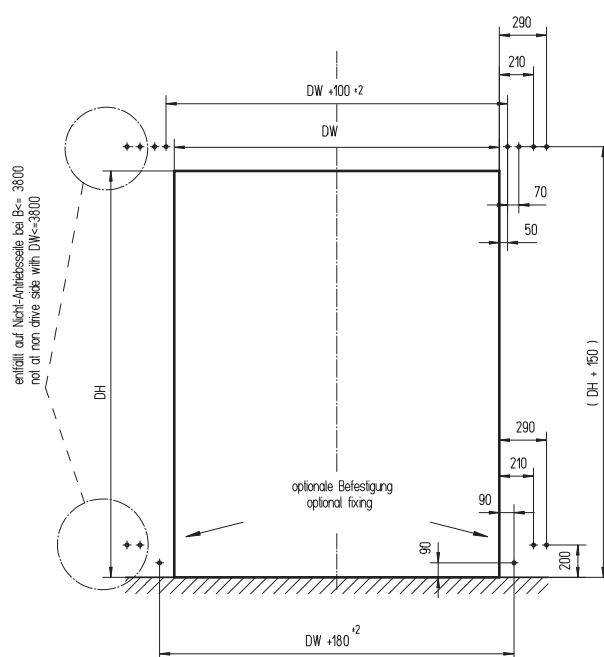
Technical drawing of a beam cross-section. The beam has a total width of 250 mm and a height of 193 mm. The top flange is 30 mm thick. The web is 140 mm wide. The drawing shows a cross-section with a hatched top flange and a central web. Dimensions are given in mm.

# General drawing/Fixing plan

## RapidRoll® 3000 R



Zg-Nr. 8300R0018/4  
Stand: 2007-08-24



Zg-Nr. 8300R0018/ Rev.a  
Stand 2006-05-22



**ALBANY DOOR SYSTEMS**

**GERMANY**

AM MONDSCHEN 25 • D - 59557 LIPPSTADT  
TEL: +49 (0) 29 41 / 766-0 • FAX: +49 (0) 29 41 / 766-294  
E-MAIL: VERKAUF.ADS.DE@ALBINT.COM

**AUSTRIA**

KIRCHENPLATZ 2 • A - 4522 SIERNING  
TEL: +43 (0) 72 59 / 43 77 • FAX: +43 (0) 72 59 / 43 77 14  
E-MAIL: INFO.ADS.AT@ALBINT.COM

**SWITZERLAND**

GROSSRIETSTRASSE 7 • CH - 8606 NÄNIKON  
TEL: +41 (0) 4 48 38 57 00 • FAX: +41 (0) 4 48 38 57 09  
E-MAIL: INFO.ADS.CH@ALBINT.COM

**WWW.ALBANYDOORS.COM**

